



Bath Royal Literary &
Scientific Institution
1824–2024

Our Bicentenary Year

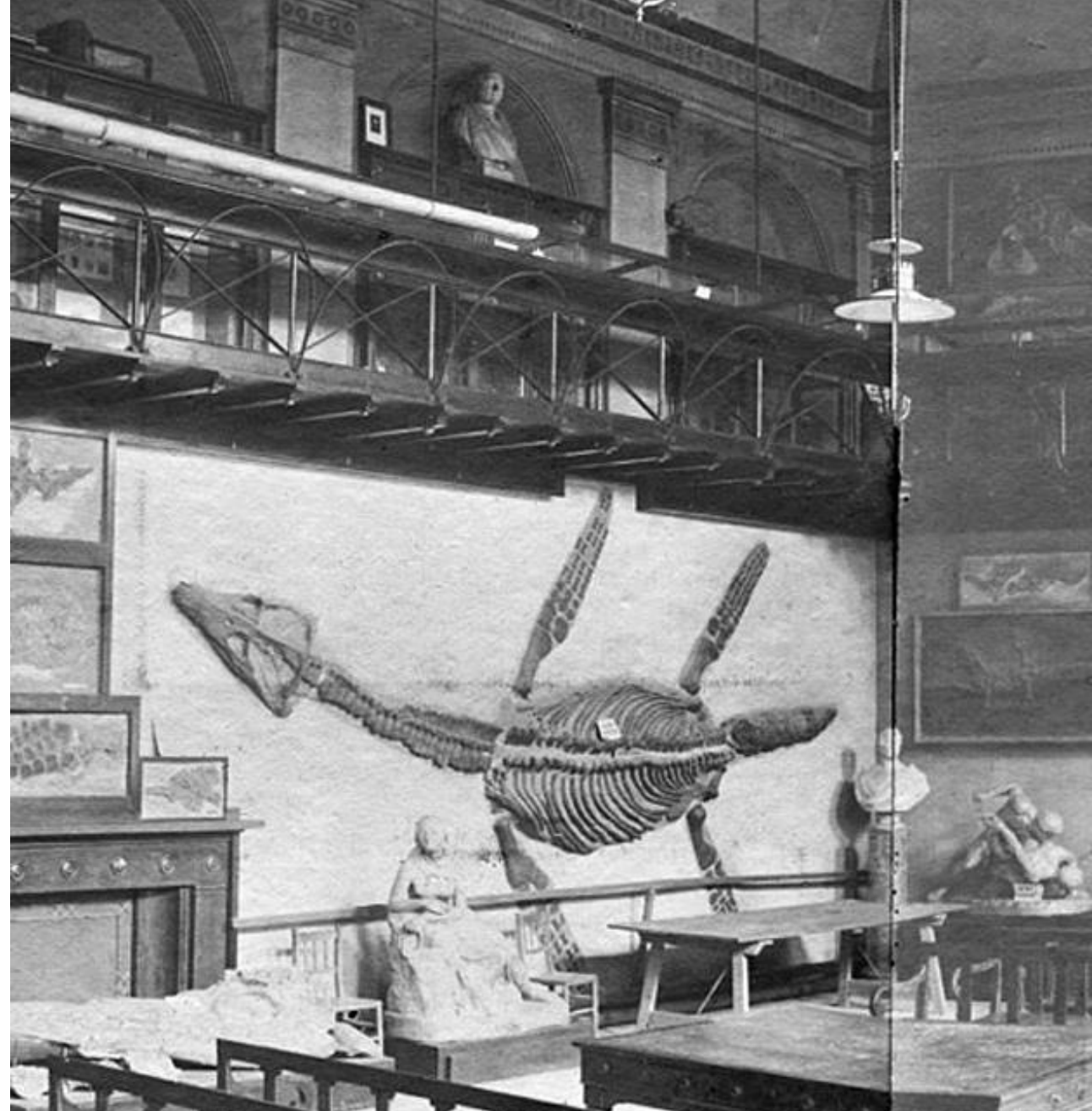
Ian Gadd & David Hall

INSPIRING MINDS SINCE 1824



What are we?

- The Bath Royal Literary and Scientific Institution (BRLSI)
- Accredited museum with 150,000 historic and scientific objects
- Venue for room-hire
- Registered charity
- Volunteer-led, with small staff team



Where are we?

- 16–18 Queen Square, Bath
(midway between Charlotte Street carpark and Milsom Street)
- Five-storey Georgian town-house
- Ground and first-floor open to public use – exhibitions, public talks, room hire
- 2nd/3rd floor: commercial tenants



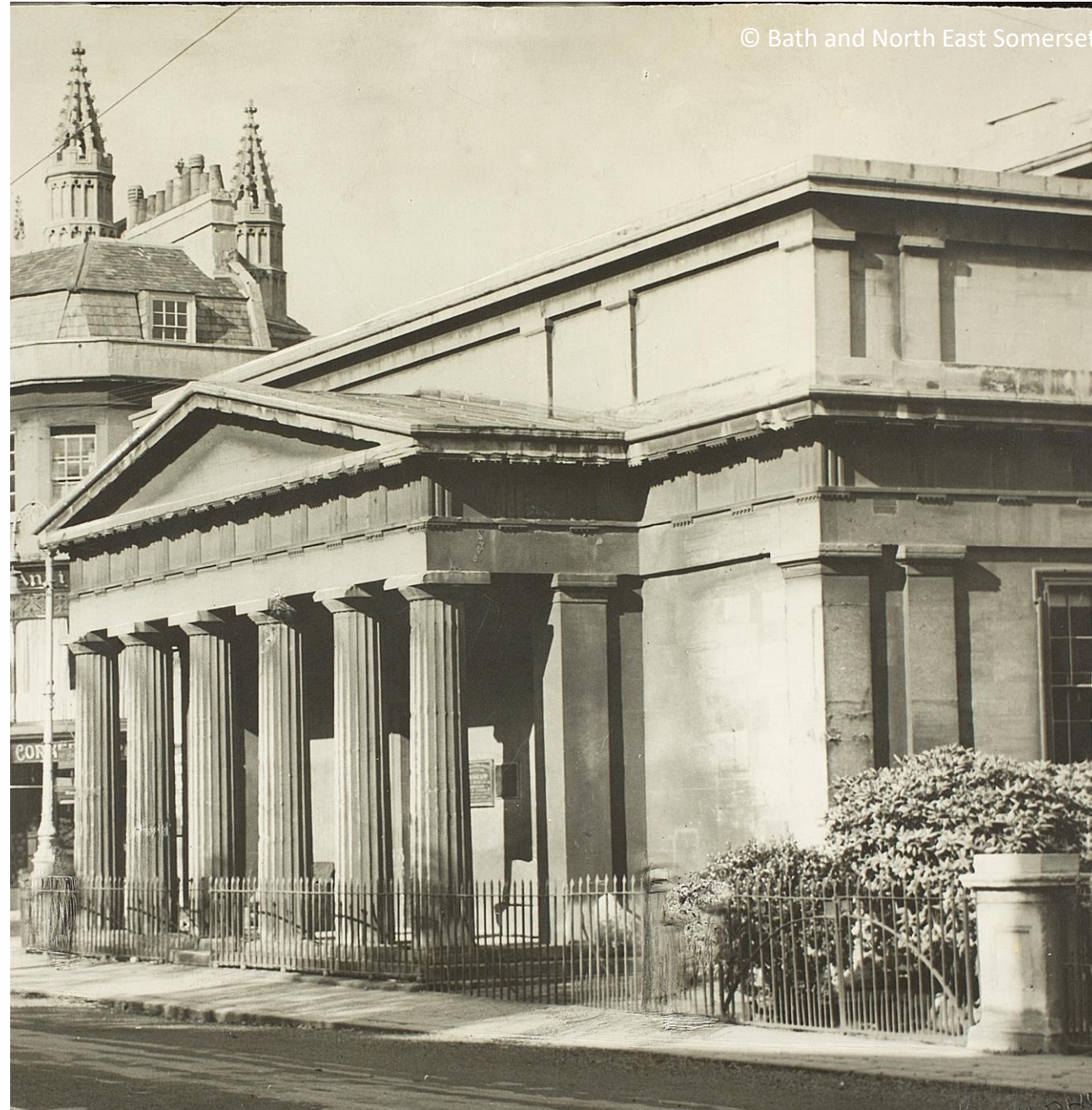
What do we do?

- Host c.150 low-cost public talks a year, with 100+ (many hybrid & recorded) organised by ourselves – c.3.5k attendees
- Free annual exhibition (March–October) – c.8k visitors
- Other public events and activities
- Room hire



Our History

- Founded in 1824-25 with special building overlooking current Parade Gardens
- 'Royal' from 1830; grew in size and prestige over 19th century
- Move to Queen Square in 1932; challenging period 1940-1990
- Revived in 1990s



Our Bicentenary

- 12 months programme including:
 - *Brilliantly Engineered (Feb)*
 - *Extraordinary Women (Mar)*
 - *Exhibition (Mar-Oct)*
 - *Family weekend (Jun)*
 - *Science Festival (Oct)*
 - *History Festival (Nov)*
 - *Dozens of special talks*
- More engaged, inclusive & visible



Future Plans

- Partnerships
- Focus on families & young people
- Establish a 'Cultural Hub'
- Potential capital project
(increased exhibition space, café,
shop, family space)
- <https://brlsi.org>

